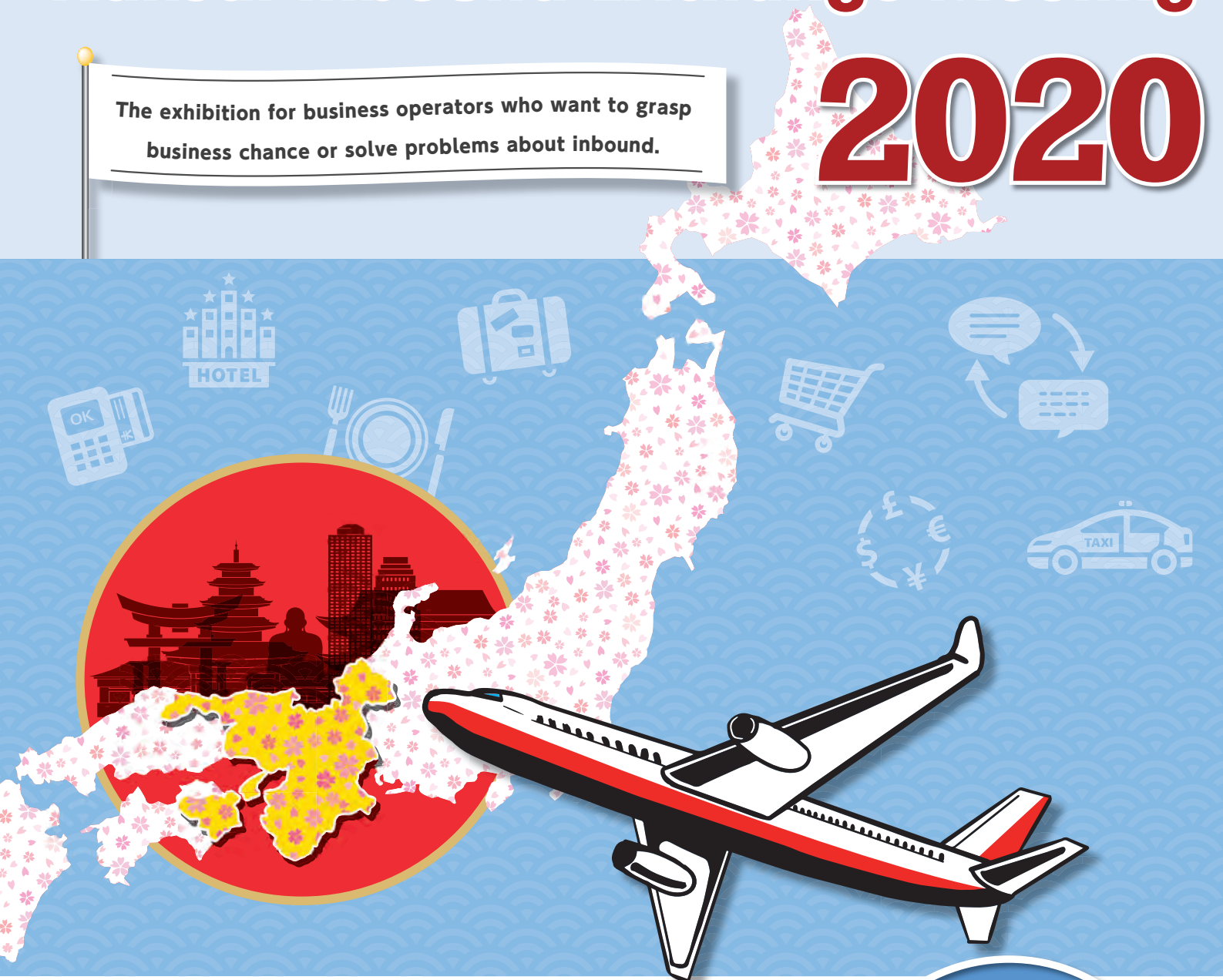


The 3rd

# Kansai Inbound Exchange Meeting

# 2020

The exhibition for business operators who want to grasp  
business chance or solve problems about inbound.



# 2/27<sub>Thu</sub> 28<sub>Fri</sub>

12:00-17:00 10:00-16:00

Venue:

## Osaka International Convention Center

<Organizer>

Executive Committee of Kansai Inbound Exchange Meeting  
(Kansai Tourism Bureau/TVO Expro Ltd.)

Exhibit  
Info

<Inquiry>

Secretariat of  
Kansai Inbound Exchange Meeting

1-2-15, Otemae, Chuo-ku, Osaka 540-0008 Japan  
TEL: +81-6-6944-9920 / FAX: +81-6-6944-9912

EMAIL: [inbound@tvoe.co.jp](mailto:inbound@tvoe.co.jp)  
<http://www.tvoe.co.jp/inbound/>

## One of the foremost inbound specialty exhibitions in Kansai

➤➤➤➤➤ **Promotion in Kansai expanding IR and EXPO demands!** <<<<<<<

In 2018, more than 30 million international tourists visited Japan and it makes various business opportunities. Kansai is known as popular sight-seeing area and aiming to attract 18 million tourists in 2020. By the IR attraction and holding the world EXPO 2025 in Osaka, the inbound related demands is expected ever-expanding.

Kansai Inbound Exchange Meeting is a good platform for connecting with visitors who seek for the latest information about inbound businesses.

### Target Category of Exhibitors

Inbound related business operators, DMO, Tourism association/group, Translate devices/service/administration, Attracting customers/marketing, Manufacturers/wholesales/sales for international tourists, Payment related/exchanging money, Duty free, Halal/Kosher/Vegan food, VR, Application, Souvenir, Entertainment related, Human resources related, Private accommodation related products/service, Insurance for inbound related business operators, Crime and disaster prevention, Infrastructure improvement, Communication system, Facility design, Event operators, Pictogram, Container/wrapping, Kitchen facilities/ equipment, Cookware, Products/system for accommodation/restaurant, Sanitation/sanitary products, Products/service for IR/EXPO related, etc.

**business chance!**



### Target Category of Visitors

#### All Inbound Operators

Local government, DMO, Tourism association/related, Travel agency, Tour operator, Land operator, Licensed guide interpreter, Accommodation, Restaurant related, Sight-seeing/entertainment/leisure facilities, MICE related operators, Retail, Transport operators, Trading companies, Manufacturers/wholesales/sales for international tourists, Halls/theaters, etc.



## Features of Kansai Inbound Exchange Meeting

### Gathering inbound related key figures

Aiming to attract visitors focusing on local government and tourism associations by holding the latest and up-and-coming various seminars, and also Kansai Tourism Bureau's dispatching of information.



### Building connection with related operators through the reception party

Holding the reception party for building connection between related operators and exhibitors/visitors who are from local government, economic organizations, tourism associations and inbound related operators.



### Exhibition Outline

**T i t l e :** The 3rd Kansai Inbound Exchange Meeting 2020

**T e r m :** February 27 (Thu.) 12:00-17:00  
28 (Fri.) 10:00-16:00

**V e n u e :** Osaka International Convention Center  
(5-3-51, Nakanoshima Kita-ku, Osaka 530-0005)

**Organizer:** Executive Committee of Kansai Inbound Exchange Meeting  
(Kansai Tourism Bureau/TVO Expro Ltd.)

**Admission Fee:** Free of charge (by registration)

**Target Number of Visitors:** 2,000 people

### What's Kansai Tourism Bureau?

Local governments, economic organizations and tourism organizations in Kansai area are joined activities and promote tourism effectively together.

The main activities are to inform about tourism promotion, marketing, providing common basis service, human resource development, and also promoting Japanese culture to overseas as a regional collaboration DMO.



**KANSAI Tourism Bureau**  
*The Exciting Journey, KANSAI*

# Exhibitor Application Guideline and Notice

## 1 Exhibit Fee:

Booth size: Frontage approx. 2.7m × Depth approx. 1.8m × Height approx. 2.1m(approx. 5 m<sup>2</sup>)

General	Member of kansai Tourism Bureau
JPY180,000 + Consumption tax per booth	JPY150,000 + Consumption tax per booth

\*10% Consumption tax is excluded the prices.

Wall panels (back panels: 2.7m, side panels: 0.9m each), 1 table, 2 folding chairs and a company name board are included.

\*Wall panels cannot be installed facing pathways.

\*Punched carpet is NOT included. (The floor in the venue is carpeted.)

\*If you apply more than 4 booths, you can choose a single row or double rows.

Space only renting is available.

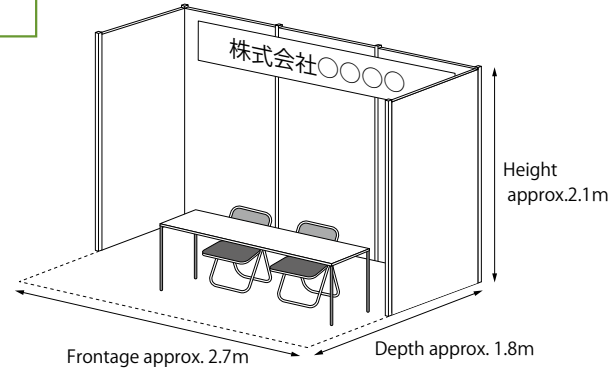
\*We cannot accept application specifying booth location (a corner booth, etc.).

\*If you need optional parts, rental furniture and electrical wiring construction work, you need to apply for it after the exhibitor manual with forms will be provided.

(Charged separately)

Application Deadline:

**December 20,  
2019**



**Free of charge for joining the reception party for one person per booth**

## 2 How to Apply

Please download an application form from official website or use the application form on the last page. After filling blanks and affixing your seal, e-mail it to the Secretariat of Kansai Inbound Exchange Meeting.

\*Please send a product brochure and company information if it is the first exhibiting.

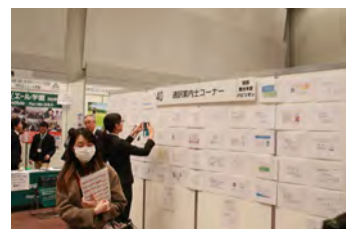
\*For listing a co-exhibitor company other than the applying exhibitor, please be sure to write it in the application form.

▶ Address for Application Forms

Secretariat of Kansai Inbound Exchange Meeting (TVO Expro Ltd.) **E-mail: [inbound@tvoe.co.jp](mailto:inbound@tvoe.co.jp)**

## 3 Schedule

Application Deadline:	Distribute Regulations, Optional Application Forms and Floor Map:	Installation:	Term:	Dismantlement:
December 20 (Fri.), 2019	Late January, 2020	February 27 (Thu.), 2020 9:00-12:00	February 27 (Thu.) 12:00-17:00 28 (Fri.) 10:00-16:00	February 28 (Fri.) 16:00-19:00



# Previous Exhibition

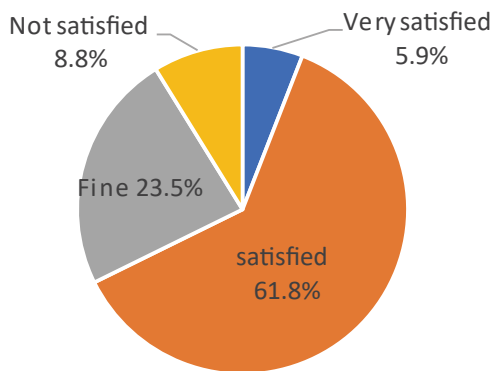
## Outline

- Title: The 2nd Kansai Inbound Exchange Meeting 2019
- Term: February 26 (Tue.) 12:00-17:00  
27 (Wed.) 10:00-16:00
- Venue: Osaka International Convention Center
- Organizers: Kansai Tourism Bureau/TVO Expro Ltd.
- Exhibition Scale: 64 companies/groups
- Admission Fee: Free of charge (by registration)

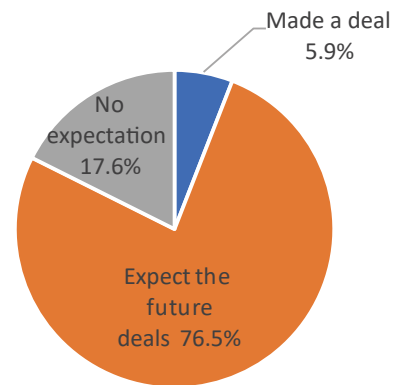
Number of Visitors		
February 26 (Tue.)	Sunny	782 people
February 27 (Wed.)	Sunny	648 people
Total		1,430 people

## Exhibitors' Impression

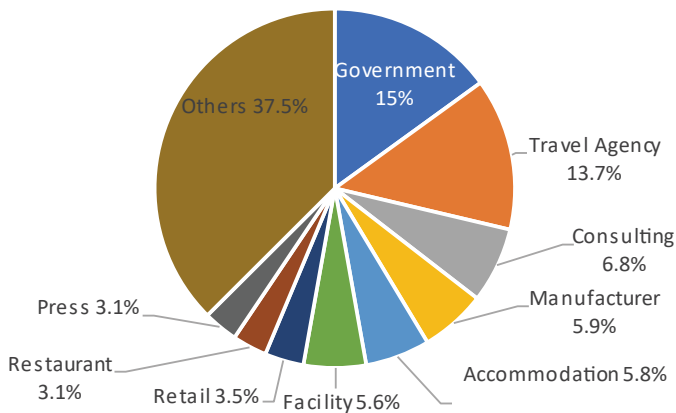
### Result of Exhibit



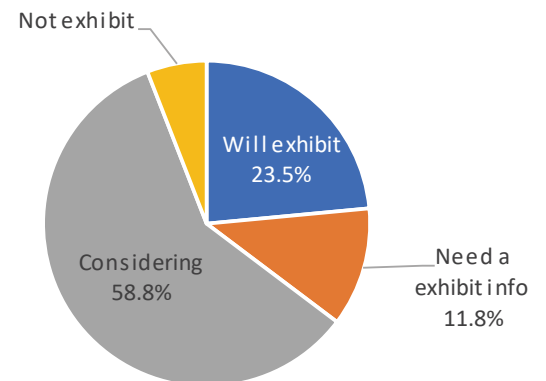
### About Deals



### Visitors' Fact

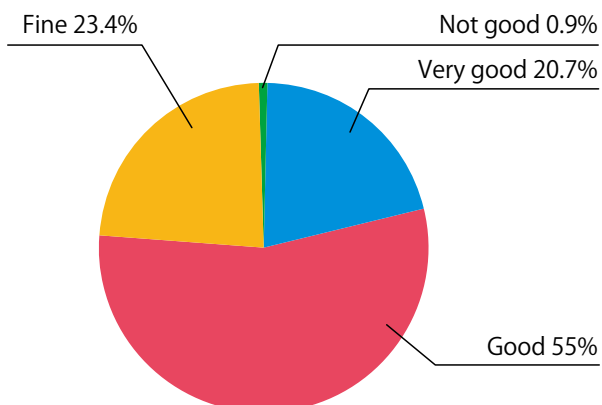


### Next Exhibition

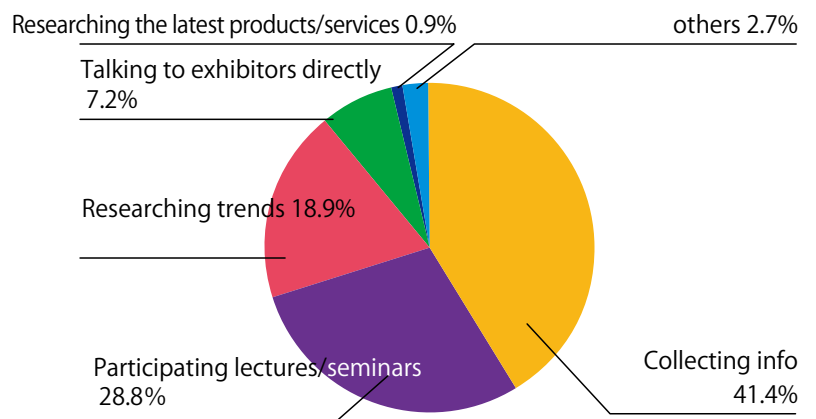


## Visitors' Impression

### Impression



### Purpose of visit



# Kansai Inbound Exchange Meeting

Please make a copy as a backup

To Secretariat of Kansai Inbound Exchange Meeting

Application Date: \_\_\_\_\_

## EXHIBIT APPLICATION FORM

Application Deadline: December 20 (Fri.), 2019

● Exhibitor \_\_\_\_\_

Company: \_\_\_\_\_

Address: \_\_\_\_\_

Country: \_\_\_\_\_ Zip Code: \_\_\_\_\_

Telephone: \_\_\_\_\_ Facsimile: \_\_\_\_\_

※Please include country & area code

※Please include country & area code

URL: http:// \_\_\_\_\_

Name of Executive: \_\_\_\_\_ Title: \_\_\_\_\_

Signature: \_\_\_\_\_

Person to Contact: \_\_\_\_\_ Division: \_\_\_\_\_  
 Mr.  Ms.

Title: \_\_\_\_\_ Signature: \_\_\_\_\_

E-mail: \_\_\_\_\_

● Number of Exhibit Booth(s) Applied for \_\_\_\_\_

Unit Cost of Booth①	Number of Booth(s) Applied for②	Exhibit Fee (①×②)	Payment
<input type="checkbox"/> General ¥180,000 (Tax excluded)	Booth(s)	¥  + 10 % Tax	the scheduled date
<input type="checkbox"/> Member of Kansai Tourism Bureau ¥150,000(Tax excluded)			

**Exhibit Fee Payment Deadline : The end of the following month that you apply.**

● Exhibit Products/Contents: \_\_\_\_\_

\_\_\_\_\_  
 \_\_\_\_\_  
 \_\_\_\_\_  
 \_\_\_\_\_

URL: http:// \_\_\_\_\_

Co-exhibitor Names: (if applicable) \_\_\_\_\_

URL: http:// \_\_\_\_\_

If you have any special requests or questions, please write them below.

send this form to

**e-mail: inbound@tvoe.co.jp**

Fax:+81-6-6944-9912

Secretariat of Kansai Inbound Exchange Meeting

1-2-15, Otemae, Chuo-ku, Osaka 540-0008 Japan

For Office Use Only

受	付
受付日	
受付番号	

請求内容	請求書 No.	請求日	入金日
出展料金			

1	2	3
4	5	6